

What's in the box?

1. MIS100V2
2. Distance guide
3. Cleaning Cloths

Specification

Capture Mode	Auto / Manual Capture
Capture Distance	110 mm - 120 mm from the surface of device, Focal depth = 10 mm
Image Format	ISO Standard 19794-6, 640 x 480 Pixels, 8 bit Grayscale, full support of K1, K2, K3, K7
Sensor Resolution	VGA
Dimension & Weight	92mm X 59mm X 30mm & Weight: Approx 75 Grams
Power	Single USB Bus Powered (DC +5V ± 5%) (Max power consumption=110mA)
Illumination	Infrared LED, Blue LED for indication
Environmental	0 °C to + 50 °C (Operating); 10% to 90% Humidity (Non-Condensing). Usage: Indoor; Outdoor (avoid direct sunlight and bright reflections)
Resolution	Spatial : > 60% @ 2.0 Lp/mm, Pixel : > 20 Pixels/mm
Connectivity	USB 2.0
Compliance & Certificates	Eye safety standard (Exempt group per IEC 62471:2006-07), RoHS, FCC-Class B, IP54*
Host OS	Windows, Linux, Embedded Linux, and Android

Precautions

1. Do not attempt to disassemble the Sensor.
2. There are no user Serviceable parts inside.
3. Do not expose or operate the Sensor to rain or moisture.
4. Do not clean the sensor with strong chemicals or acids.
5. Do not operate the sensor beyond its operating Temperature & operating Humidity.
6. Do not place the device beyond to heating elements.
7. Do not place magnet near to device while operating.
8. Do not operate the sensor beyond its operating Voltage.
9. Do not drop the device or submit it to sudden impact or mechanical stresses.
10. Do not remove the device label or warranty seal.

Any damage to the device caused by these activities will void the warranty.

Operating & Handling Instructions

1. Handle the sensor with proper care to avoid damage of the sensor.
2. Clean the glass portion of the sensor with the cleaning cloth provided or use special optical cloth in order to clean the glass area.
3. Store the sensor in a cool & dry place when not in use.
4. Disconnect the sensor from your desktop/Tablet/Mobile when not operating.
5. Operate the sensor within the operating limits specified.
6. Use only the USB Cable provided & don't attempt to replace it.
7. Install the driver as per driver installation guide; if the sensor does not work make sure the sensor is detected as Mantra IRIS Sensor in the device manager as shown below. If the sensor is not detected, please Re-install the drivers for proper functioning of the sensor. In case of further problem please contact your technical support person for assistance.

Download Drivers & SDK

<http://download.mantratecapp.com>

Centralized Support

Cell: 079-49068000

Support/RMA Email

support@mantratec.com

MIS100V2

SINGLE IRIS SENSOR



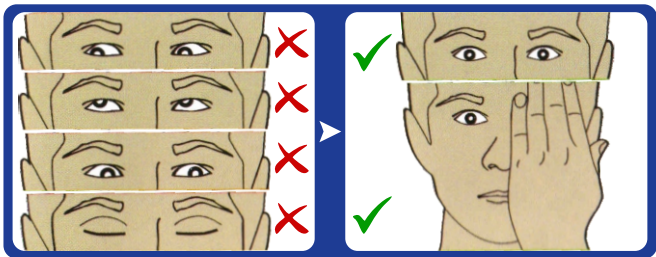
MIS100V2 is a high quality IRIS sensor used for IRIS authentication for desktop or mobile or network security. MIS100V2 can be used for authentication, identification and verification functions that let your IRIS act like digital passwords that cannot be lost, forgotten or stolen. Hard optical sensor is resistant to scratches, impact, vibration and electrostatic shock.

Congratulations on purchasing MIS100V2, a PC/Tablet/Mobile based IRIS sensor designed specially to provide high level biometric security as well as complex network environments.

1 Assembly

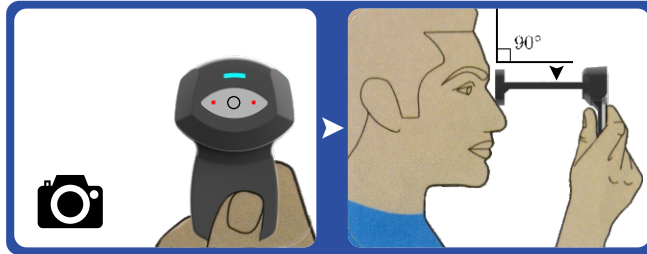


Attach Guide Distance, Connect Cable & Wait for 10 secs.

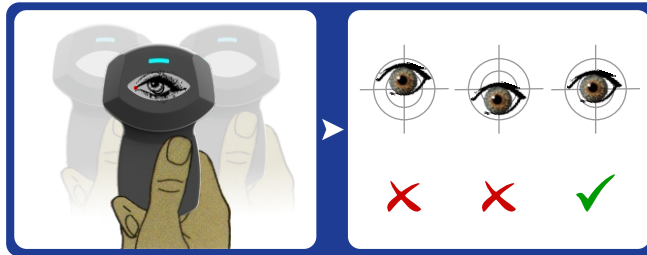


Look directly into the device

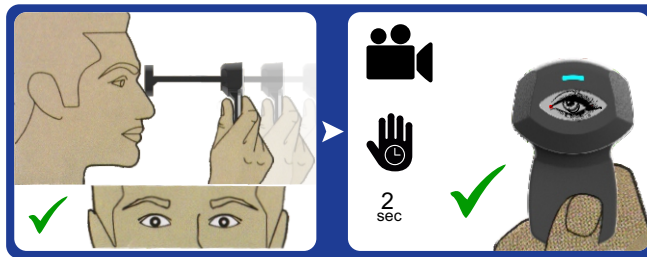
2 User



Ensure device is switched ON.
(Observe red indicator light in front)

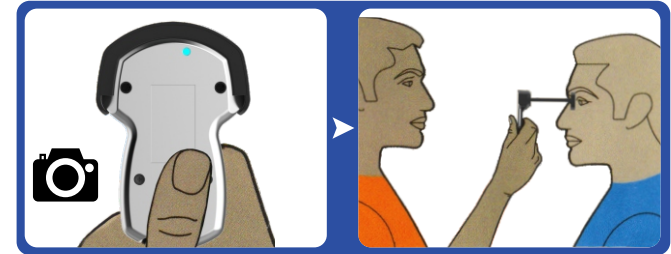


Place the device on your eye.
Look straight into inner circle of the device for alignment.

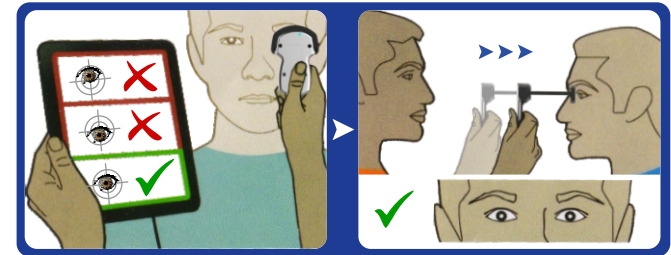


Place the Guide Distance on your eye
Capturing occur when blue light blinks.
Wait for 2 secs for process to get over.

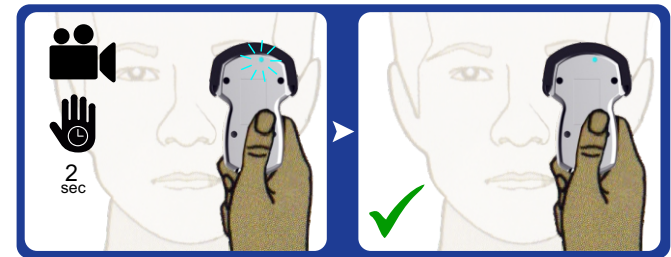
3 Operator



The rear light indicates the Camera is ON.
Place the Guide Distance on the eye.



Align inner circle of the device as per
eye of the subject.



A blinking Blue light indicates the capturing is
under process. Wait until the light turn green.